

AG-28

Fiberglass Paint Arrestor Pads



- **Effectively removes paint overspray solids of all types - lacquer, air dry or baked enamel.**
- **Protect exhaust ducts, fans, and motors from paint build-up.**
- **Clean exhaust air is discharged to the atmosphere.**
- **Economical to use.**

OPEN WEAVE FIBER PATTERN HOLDS MORE PAINT

AG-28 pads are designed exclusively to collect paint overspray. They are made from continuous filament glass fibers with an open weave pattern that allows particles to penetrate deep into the pad. Paint is collected throughout the full depth, extending pad life and reducing costs. A skin backing on the air leaving side serves as a final barrier to prevent paint and other coatings from penetrating through the media.

SMOOTH AIRFLOW THROUGH BOOTH PREVENTS "FOGGING"

A specially formulated thermoset resin provides high compression strength preventing AG-28 pads from collapsing and face-loading as they become saturated. Air continues to flow smoothly through the pads preventing "fogging" or misting of paint particles in the booth. Overspray is drawn into the pads so that it does not settle on spray guns, walls, floors, or conveyors. Proper airflow assures healthier working conditions in conformance to OSHA standards.

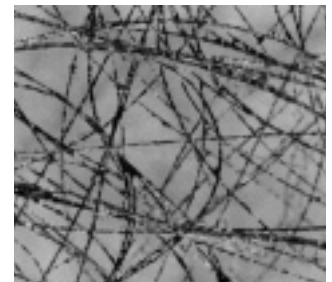
CLEANER EXHAUST AIR — FEWER MAINTENANCE, ENVIRONMENTAL PROBLEMS

Continuous filament glass fibers force paint laden air to change directions many times as it passes through the pad. Paint particles, unable to follow the continuously weaving air stream, collect on the fibers. Cleaner exhaust air flows on through.

Maintenance problems and the hazards of fire are reduced because fans, motors, and ducts do not accumulate layers of paint. Cleaner air is discharged to the atmosphere protecting the local environment from unintentional "dusting" and costly property damage.

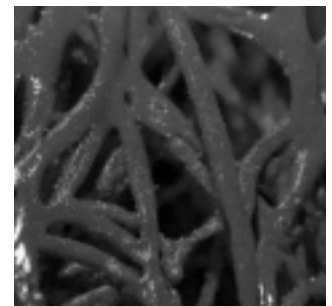
FAST, EASY INSTALLATION AND REMOVAL

An entire bank of AG-28 pads can be changed in a few minutes. They fit into standard holding frames, no new grids or other accessories needed. AG-28 pads are directly interchangeable with other types of paint arrestors. Only one AG-28 pad is required per frame, including installations where two paper pads are currently used.



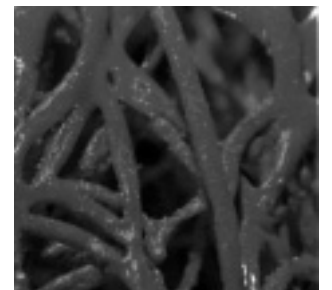
Lightly Loaded Air Entering Side

Close-up photo shows open weave pattern that allows over-spray to penetrate deep into the pad.



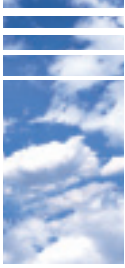
Heavily Loaded Air Entering Side

Same magnification of heavily loaded pad illustrates the large holding capacity of each fiber. The open space between fibers continues to permit good airflow and allow paint to penetrate.



Heavily Loaded Cross Section

Cross section view shows how AG-28 pad is completely utilized by collecting paint throughout the full depth.



AG-28

SPACE-SAVING DISPENSER CARTON

The AAF exclusive packaging design has 60 two-inch pads in a carton only 10 1/2" high.

These cartons are easily carried to and from the booth. A perforated, easy-open dispenser top permits fast removal of pads. They spring back to their original 2" thickness when removed, while the remaining supply is held conveniently in place until needed.

PRODUCT INFORMATION

Standard Sizes	Quantity Per Carton	Shipping Wt. (Lbs. Per Carton)
PADS		
16½" X 20½" X 2"	60	9.0
16½" X 25½" X 2"	60	9.5
20½" X 20½" X 2"	60	9.0
20½" X 25½" X 2"	60	11.5
24" X 24" X 2"	60	13.0
ROLLS		
20" X 85' X 2"	2	14.0
25" X 85' X 2"	2	18.0
30" X 85' X 2"	2	21.0
36" X 85' X 2"	2	29.0
40" X 85' X 2"	2	30.0
48" X 85' X 2"	2	32.0
60" X 85' X 2"	1	22.0

Underwriters Laboratories, Inc. Classification: AG-28 media is classified U.L. Class 2. Testing was performed according to UL Standard 900.

Initial Resistance: .09" w.g. @ 300 fpm .14" w.g. @ 400 fpm .20" w.g. @ 500 fpm

Color: White on air entering side. Green tint on air leaving side.

Specifications:

Paint Arrestor Media shall be of the disposable type and supplied in either pre-cut pads or rolls 85' in length. Media shall be dry and composed of continuous filament glass fibers bonded together with a cured resin. The media shall be white on the air entering side and tinted on the air leaving side with a contrasting color. The media shall be classified Class 2 by Underwriters Laboratories, Inc. Pre-cut pads shall be contained in a dispenser carton of the approximate length and width of the pads and no more than 12" in height. Each carton shall contain 60 pads. Access to the pads shall be through an easy-open perforated top which shall allow pads to be removed individually while holding the remaining pads in place. Rolls of standard width shall be packaged (one, two) per carton. Other widths will be packaged at the discretion of the manufacturer. The shipping container shall be identified with no less than the product name, size, quantity, and the approved listing mark from Underwriters Laboratories, Inc. Filter media shall be as manufactured by AAF International and identified as AG-28 Paint Arrestor Pads or Rolls.



10300 ORMSBY PARK PL STE 600
LOUISVILLE KY 40223-6169
P O BOX 35690
LOUISVILLE KY 40232-5690
www.aafintl.com

For Additional Information Call
888.AAF.2003
FAX 502.637.0321

AAF has a policy of continuous product research and improvement and reserves the right to change design and specifications without notice.

