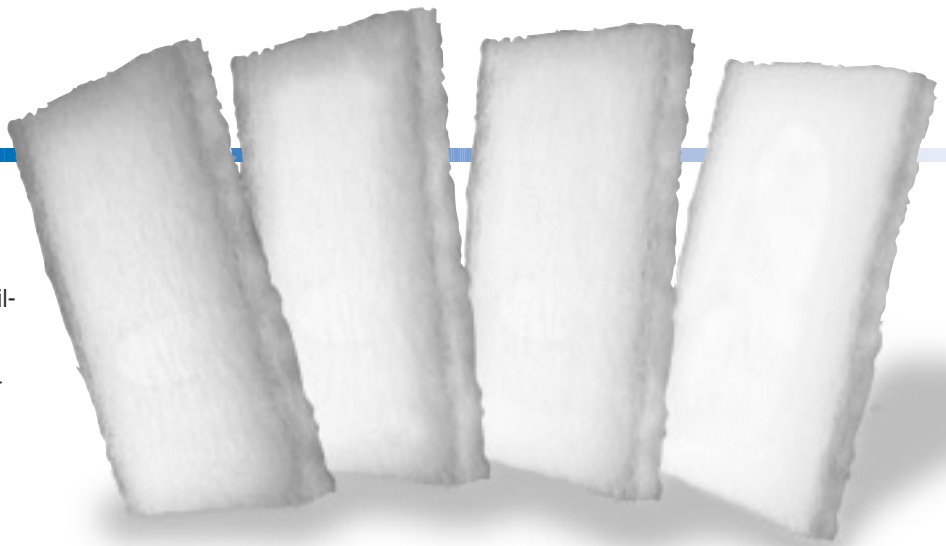


FrontLine™

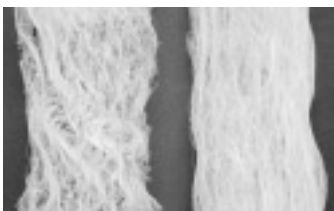
Fiberglass Air Filter Media

High performance media available with a range of performance features to meet the specific requirements of your ventilation system.



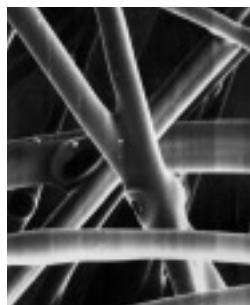
FEATURES

	FrontLine Gold <i>Designed for the toughest operating conditions, offers the highest performance and best value.</i>	FrontLine Blue <i>Designed for high performance during normal operating conditions.</i>	FrontLine Green <i>The economical choice for high performance during light duty operating conditions.</i>	FrontLine Red <i>Ideal for higher temperature applications.</i>
Media	Industrial grade for extra heavy dirt loading conditions, tinted gold on air leaving side	Commercial grade for medium to heavy dirt loading conditions, tinted blue on air leaving side	Standard grade for light dirt loading conditions, tinted green on air leaving side	U.L. Class 1, High temperature media for applications up to 250°F (121°C), tinted red on air leaving side
Sizes	1" and 2" thick	1" and 2" thick	1/2", 1", and 2" thick	2" thick
Fiber Content	Extra High	High	Standard	Extra High
Media Construction	Progressive Density Bonded-Fiber Particle Barrier	Progressive Density Bonded-Fiber Particle Barrier	Constant Density	Progressive Density
Compression Strength	Very High	High	Standard	Very High
Viscosine® Adhesive	Heavy Application	Medium Application	Light Application	No adhesive, dry media



FIBER CONTENT

Higher fiber content provides more dirt catching media surface. Note the difference in fiber content between FrontLine Gold (right) and a competitive media (left).

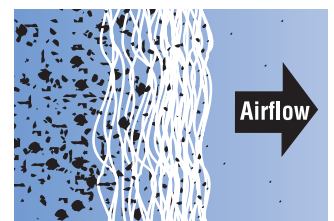


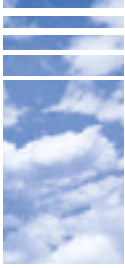
COMPRESSION STRENGTH

Resin applied to the fiberglass during spinning is cured in an oven to form a strong bond at each fiber intersection. Bonded fibers increase compression strength, allowing air to move throughout the entire thickness of the media. This highly magnified photomicrograph shows how each fiber intersection is solidly bonded.

MEDIA CONSTRUCTION

FrontLine Gold, Blue, and Red fiberglass media are designed with "Progressive Density" construction. Fibers on the air entering side are interlaced in an open pattern which becomes progressively tighter. Dirt loads from back to front, taking advantage of the entire thickness of the media. This construction prevents faceloading, and increases air-resistance and dust holding capacity.



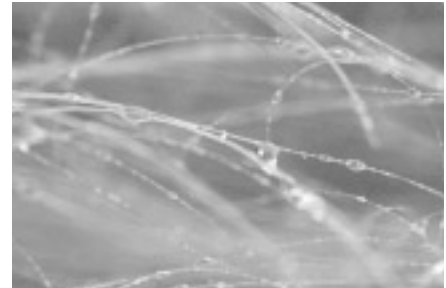


BONDED FIBER PARTICLE BARRIER

FrontLine Gold and FrontLine Blue fiberglass media are constructed with a tightly bonded layer of fibers on the air leaving side forming a final barrier against dirt. This skin backing improves filter performance by preventing particles from migrating through the media and flowing downstream.

VISCOSINE® ADHESIVE

AAF International's exclusive Viscosine adhesive helps retain particles as they impinge on fibers, preventing them from breaking away and flowing downstream. Non-toxic and odorless, Viscosine adhesive maintains its highly viscous, dirt-trapping characteristics over the life of the filter.



PERFORMANCE DATA

All media are available in pads and rolls.

Media Type	⁽¹⁾ Rated Initial Resistance (In. WG)			⁽¹⁾ Rated Average Arrestance (%)		Recommended Final Resistance (In. WG)
	300 FPM	500 FPM	625 FPM	300 FPM	500FPM	
FRONTLINE GOLD						
1"	.10	.20	.27	85-90	75-80	1.0
2"	.13	.25	.35	85-90	80-85	1.0
FRONTLINE BLUE						
1"	.09	.19	.26	80-85	70-75	1.0
2"	.10	.21	.30	85-90	75-80	1.0
FRONTLINE GREEN						
½"	.14	.16	N/R	65-70	65-70	.5
1"	.07	.18	.24	80-85	70-75	1.0
2"	.10	.20	.30	80-85	70-75	1.0
FRONTLINE RED						
2"	.10	.25	.35	75-80	65-70	1.0

(1) All performance data is based on ASHRAE 52.1-1992 test method. Performance tolerances conform to Section 7.4 of ARI Standard 850-93.

Continuous Operating Temperature:

FrontLine Gold	175°F	(79°C)
FrontLine Blue	175°F	(79°C)
FrontLine Blue Dry	200°F	(93°C)
FrontLine Green	175°F	(79°C)
FrontLine Red	250°F	(121°C)

Underwriters Laboratories, Inc.

Classification — All FrontLine media are Class 2, except FrontLine Red which is Class 1. Testing was performed according to U.L. Standard 900 and CAN 4-111.



10300 ORMSBY PARK PL STE 600
LOUISVILLE KY 40223-6169
P O BOX 35690
LOUISVILLE KY 40232-5690
www.aafintl.com

For Additional Information On AAF Products,
Call The Answer Center
888.AAF.2003

